

# Barry & Jenny's Release

Gladstone Harbour Report Card 2019

Written by Heidi Jones | Illustrated by Ping

Published by Amarna Pty Ltd (on behalf of GHHP)

PO Box 3465, Tannum Sands QLD Australia

[www.amarna.com.au](http://www.amarna.com.au)

ISBN 978 0 9943962 2 8 | © copyright Amarna Pty Ltd (on behalf of GHHP).

All rights reserved. No part of this publication may be reproduced, stored in a retrieval system, or transmitted in any form or by any means, electronic, mechanical, photocopying, recording or otherwise, without the prior permission in writing of Amarna Pty Ltd (on behalf of GHHP).

# Barry & Jenny's Release

Gladstone Harbour Report Card 2019

Welcome to Gladstone Harbour,  
Barry and Jenny's next expedition,  
Where we travel through the harbour,  
And check on its condition.

To make sure the harbour is healthy,  
It is tested through the year.  
Results come back in a report card,  
And we have those results right here.

In a report card, just like at school,  
Grades range from 'A' to 'E'.  
'A' is excellent, 'E' very poor  
And 'C' is satisfactory.

Barry asks "How healthy is the harbour?  
And how did the grades come about?"  
"I'm not sure." Jenny replies,  
"But I think we are about to find out."



2019  
GLASGOW HARBOUR  
WATER DATA



The environment has been tested,  
With fish, habitat and field surveys.  
Samples were taken of sediment,  
Seagrass, coral and waterways.

Jenny holds up the report card,  
“**Environmental** result was a ‘C’.”  
That means the results passed  
And were graded satisfactory.

Barry Mundy takes the report card  
And dives to the harbour floor.  
“Gather around my ocean friends,  
Let’s look at this some more.”





ENVIRONMENTAL RESULTS

WATER & SEDIMENT

HABITATS

FISH & CRABS

A

D

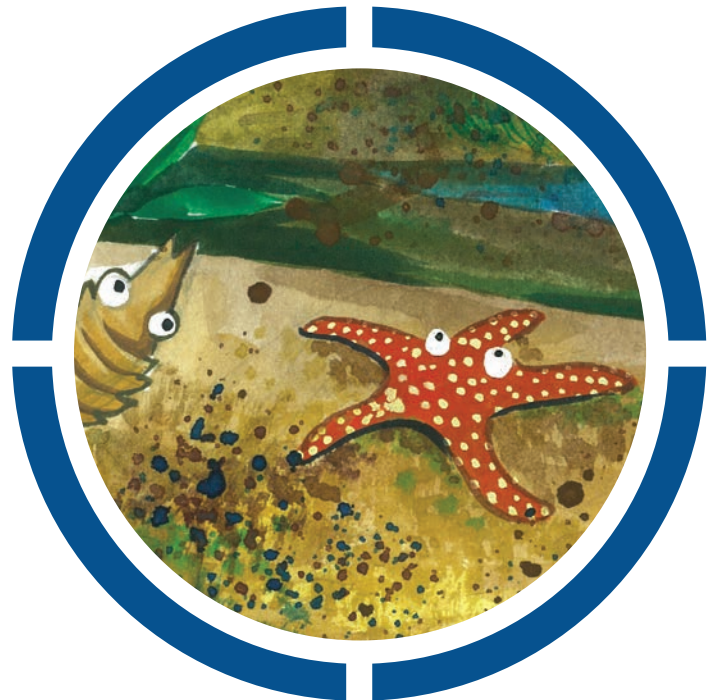
D



The **water & sediment** grade was very good,  
The result was an 'A'.  
That's a fantastic outcome,  
For the creatures, it is a happy day.

**Habitats** remained a 'D',  
Coral conditions were very poor.  
With mangroves a 'C' and seagrass improving,  
Perhaps there is a better future score?

**Fish and crabs** were rated a 'D',  
Fish recruitment and mud crabs too.  
But fish health condition was good,  
So, scientists will continue to review.



Sophie Seagull squawks and yells  
“How did social health go?”  
Barry Mundy holds up the report,  
“Hang on, I’ll let you know.”

The **Social** health score remained a ‘B’,  
With **harbour usability** satisfactory.  
Harbour **access and liveability** were also graded ‘B’,  
Reflecting the feelings of the community.



It is here people love to relax,  
Fish, swim and play in parks.  
The harbour is an important place,  
An iconic social landmark.



SOCIAL RESULTS

B

Includes  
State  
Map

Context  
Description  
Details

6  
NO WASH





SOCIAL RESULTS

HARBOUR ACCESS	B
LIVEABILITY/WELLBEING	B
HARBOUR USABILITY	C

Sophie Seagull grabs the report,  
“Let me break it down.  
Getting a ‘B’, which means good,  
Is **harbour access** ‘round town.”

How it feels to live here,  
Is **liveability & wellbeing**.  
With a grade of ‘B’, it is good  
And the creatures are agreeing.

**Usability** satisfaction was graded ‘C’,  
That’s safety and use for play.  
This information was gathered,  
Through a telephone survey.



Maggie Magpie grabs the report,  
“It’s my turn, let me see!”  
Flying high, Maggie yells,  
“Sophie Seagull can’t catch me!”

The **economic** health was good, a ‘B’.  
But what does that really mean?  
How many people come to visit,  
How many ships have been.



It includes all major industry,  
Tourism and fishing too.  
Three key areas are measured  
Performance, stimulus and value.





STIMULUS  
VALUE  
ECONOMIC RESULTS

PERFORMANCE

A

E

C



Harbour **performance** indicates  
How many tourists come to stay,  
Commercial fishing and ship movements.  
It was very good, an 'A'.

Recreation **value** of the Harbour,  
Graded 'B', means it was good.  
People value fishing, swims and picnics,  
As Maggie thought they would.

**Stimulus** looked at the current employment rate,  
And the lifestyle of the community.  
Scoring a 'C' is an okay result,  
With life in Gladstone offering opportunity.



Flying over East Shores Precinct,  
The report slips from Maggie's claws.  
Dougie Dugong and his friends,  
Wait and watch until it falls.

**“Cultural** health got a ‘C’,”  
Dougie reads for all to hear.  
“Sense of place remained good,  
With Cultural Heritage the same as last year”.



Local indigenous sites were assessed,  
Barney Point and The Narrows too,  
Facing Island and Wild Cattle Creek,  
Just to name a few.





CULTURAL RESULTS  
SENSE OF PLACE  
CULTURAL HERITAGE

B

C

Telina Turtle takes the report card,  
Her hatchlings come to see.  
Because Cultural Heritage has not changed,  
The 2018 results were used as key.

Many sites have been visited,  
Lots of information collected.  
Each site was checked and photographed,  
Places to be protected.



The report is returned to Jenny Claw,  
It's a little torn and tattered.  
But knowing the health of Gladstone harbour,  
Is all that really mattered.

The results, overall are mixed,  
But what is really clear,  
Is our continued harbour monitoring,  
For another report card next year.



Swimming away to her ocean friends,  
Jenny looks back with a grin.  
“I can’t wait to do this all again,  
When next year’s results are in.”



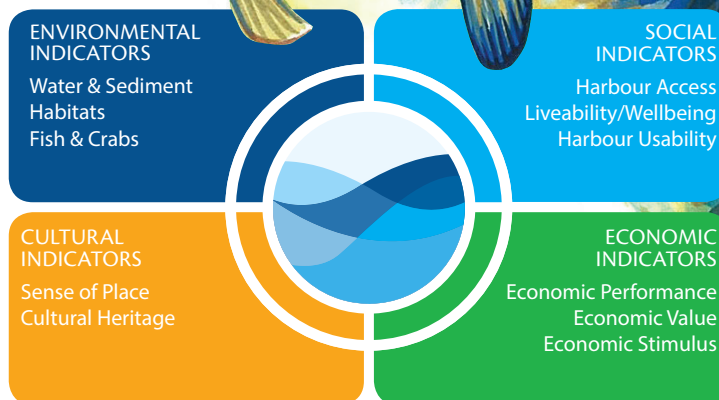
## Gladstone Healthy Harbour Partnership

**Gladstone Healthy Harbour Partnership (GHHP)** presents its fourth story book, Barry & Jenny's Release (Gladstone Harbour Report Card 2019) which articulates the results of the 2019 Report Card. Many local families now have the collection in their homes, with several story books being sent to relatives all over the world.

Schools use these story books in their classrooms to teach students about scientific research that is taking place in their community.

We hope you enjoy reading all about Barry, Jenny, Dougie and friends as they help GHHP present the process and results of monitoring Gladstone Harbour.

For more information go to [www.ghhp.org.au](http://www.ghhp.org.au)



### Acknowledgements

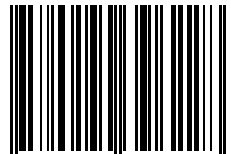


### Acknowledgement of Country

The Gladstone Healthy Harbour Partnership acknowledges the traditional owners of the land and sea in the Port Curtis Coral Coast region, the Gurang, Gooreng Gooreng, Taribelang Bunda and Bailai people, and pays respect to the ancestors, the Elders both past and present, and to the people.



ISBN 978-0-9943962-2-8



9 780994 396228 >