



Gladstone Healthy Harbour Partnership



The Gladstone Healthy Harbour Partnership with 21 partners independently monitors and reports on the health of Gladstone Harbour from The Narrows in the north to Rodds Bay in the south.

The Gladstone Harbour is an icon that is treasured by the local community for its recreation value and the significant contribution it makes to the economy. The Port of Gladstone is Queensland's largest multi-commodity port and Australia's third largest coal exporting terminal, making it also significant nationally and internationally.



Paul Birch,
Chair GHHP

A Message from the Chair

This year has continued to see the Gladstone Healthy Harbour Partnership (GHHP) deliver a clear and concise report on Harbour health to the wider community. After seven years we can finally say all aspects of our report card have been completed and we continue to be a benchmark for other regions to follow.

This last year has seen the Management Committee continue to build on the great work of prior years and it was very pleasing to see the Memorandum of Understanding between Partners reviewed. As new report cards are established along the east coast of Australia it is important that GHHP continues to assist in their development and also be at the forefront of ensuring a clear and concise message is delivered to the community.

The Independent Science Panel (ISP) under the leadership of Professor John Rolfe has continued to supply the Partnership with quality information and recommendations and I am sure they will continue to develop, refine and improve the report card measures in future report cards.

I wish the Gladstone Healthy Harbour Partnership every success in the year ahead and I remain positive it will continue to deliver accurate information in future years.

My thanks and appreciation to all the Partners, Management Committee, ISP and staff for their passion and commitment to monitoring and reporting on the health of Gladstone Harbour.

MANAGEMENT COMMITTEE



Paul Birch
CHAIR



Alan Hayter
INDUSTRY



Brent McLellan
COMMUNITY



Desley O'Grady
GOVERNMENT



Rachel D'Arcy
GOVERNMENT



Elyse Riethmuller
COMMUNITY



Gerry Graham
COMMUNITY



Dr Megan Ellis
INDUSTRY



Michelle Nelson
GOVERNMENT



Professor Owen Nevin
RESEARCH



Patrick Hastings
INDUSTRY

INDEPENDENT SCIENCE PANEL



Professor John Rolfe
ISP CHAIR



Dr Cathy Dichmont



Dr Jennifer Stauber



Dr Mellissa Dobbie



Dr Richard Brinkman



Dr Rob Coles



Ms Jane Waterhouse



Associate Professor Eva Abal

GHHP STAFF



Dr Mark Schultz
SCIENCE



Mac Hansler
SCIENCE



Lyndal Hansen
COMMS



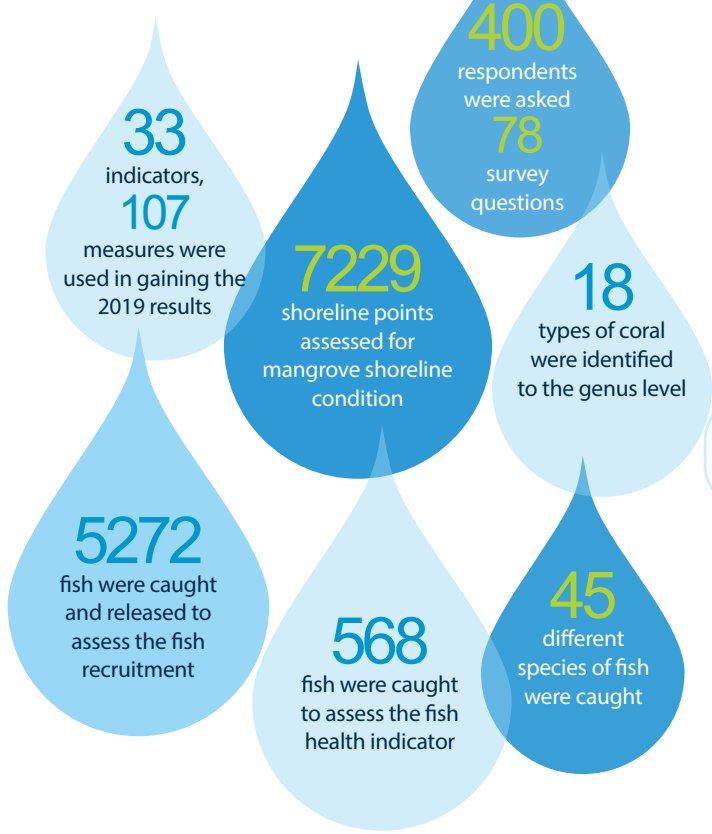
Amy Pople
COMMS



Kylie Tapurau
SECRETARIAT

GHHP HIGHLIGHTS BY NUMBERS 2018-19

SCIENCE



COMMUNICATIONS



STATEMENT OF INCOME & EXPENDITURE REPORT

Gladstone Healthy Harbour Partnership FINANCIAL YEAR 2018/19

	2018-19	2017-18
Income	\$	\$
Carryover	1,181,708.14	1,709,904.18
Membership	1,080,000.00	1,255,050.00
Interest	3,794.73	7,935.94
Total Income	2,265,602.87	2,972,890.12
Expenditure	\$	\$
Projects	1,571,103.77	1,442,785.18
Project Delivery	292,925.84	294,278.37
Engagement	35,289.93	27,212.11
Governance	28,912.28	26,906.32
Total Expenditure	1,928,231.82	1,791,181.98
Surplus	337,371.05	

* Note all figures are GST exclusive



WANT TO KNOW MORE? visit www.ghhp.org.au



Gladstone Healthy Harbour Partnership
PO Box 3465 Tannum Sands Queensland 4680
info@ghhp.org.au | www.ghhp.org.au | 1800 241 254

VISION 'GLADSTONE HAS A HEALTHY, ACCESSIBLE, WORKING HARBOUR'